

## SPECIFICATION SHEET

### Photo



### Product Information

**Item Descriptions:** Single-lever basin mixer with pop-up waste

**Model:** CYO

**Article No:** 33505811-28

**Material:** Brass

**Brand:** DORNBRCHT

**Finish:** The colour / finish may vary on actual

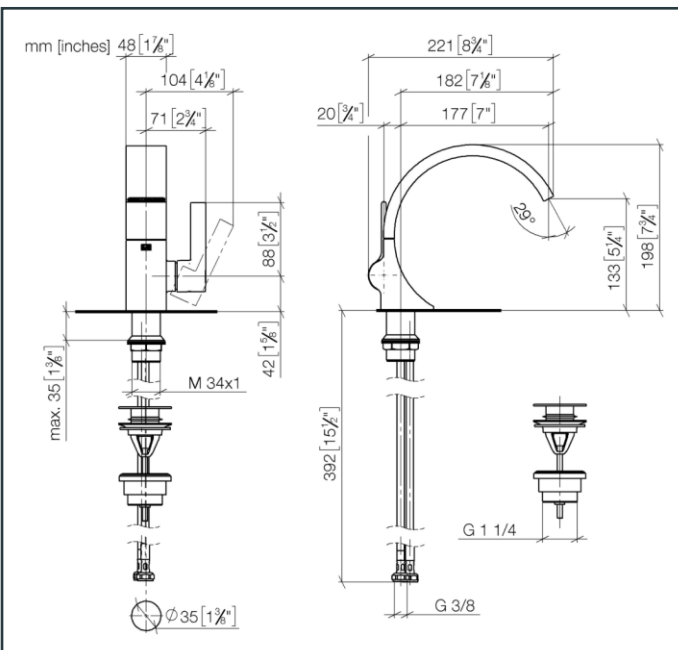
Brushed Durabrass\_28



### Specifications:

- 177mm projection
- Fixed spout
- Rectangular, air-enriched flow
- Height of mixer 198 mm
- Height up to aerator 133 mm
- Hole diameter 35 mm
- 2x screw-in M 8 x 1 pressure hose, leak-tested
- Max. flow 4.5 l/min
- Lead-free
- This product can help a building meet the requirements of Green Building Rating Systems, e.g. LEED®, BREEAM®, DGNB
- WRAS 2111040
- Only suitable for basins with an overflow.
- Must not be combined with continuous-flow heaters heaters.
- Distance from Centre of tap hole to wall min. 55 mm or to front edge of basin min. 40 mm.

### TECHNICAL DRAWING



### FLOW RATE

